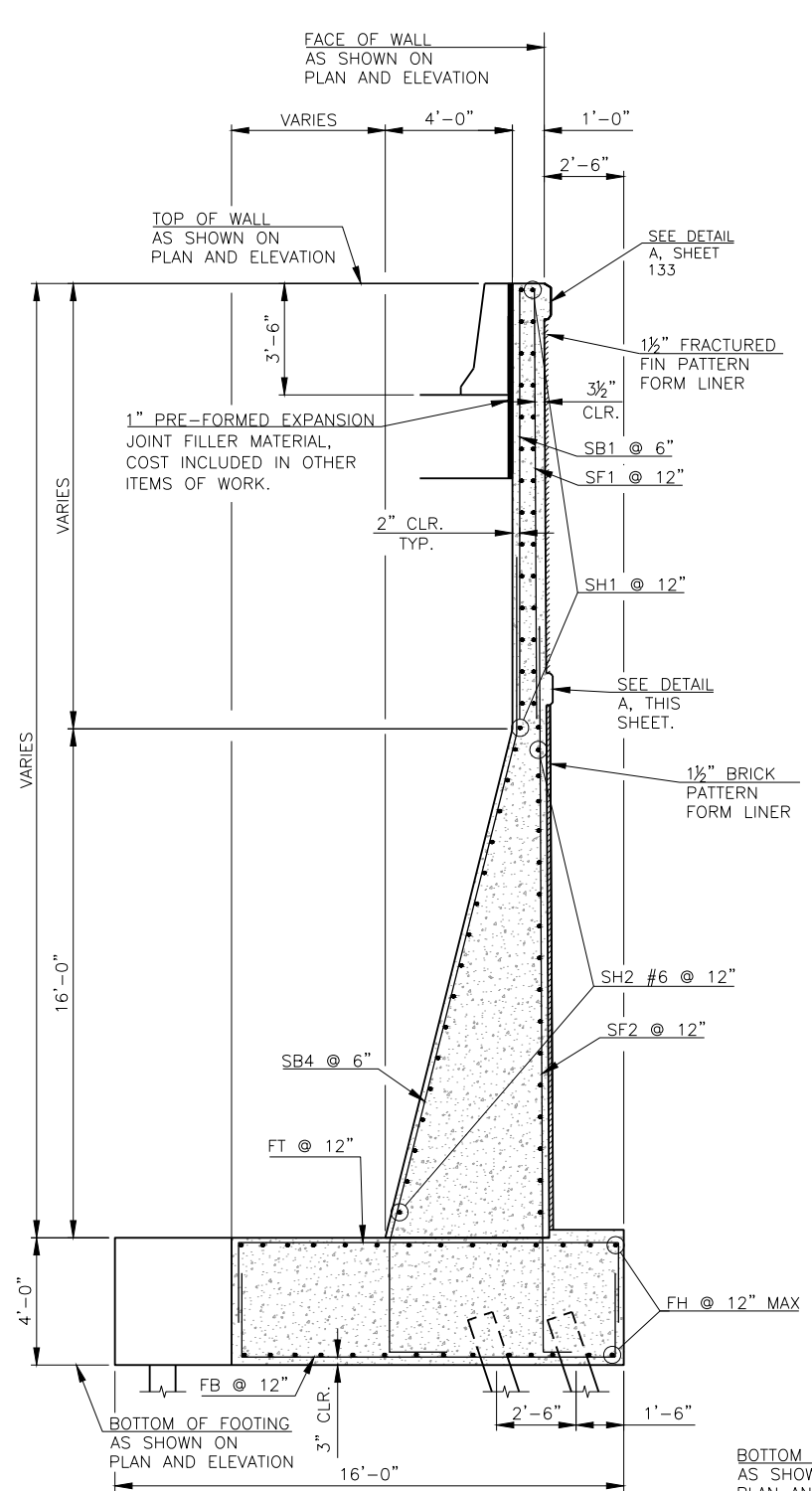
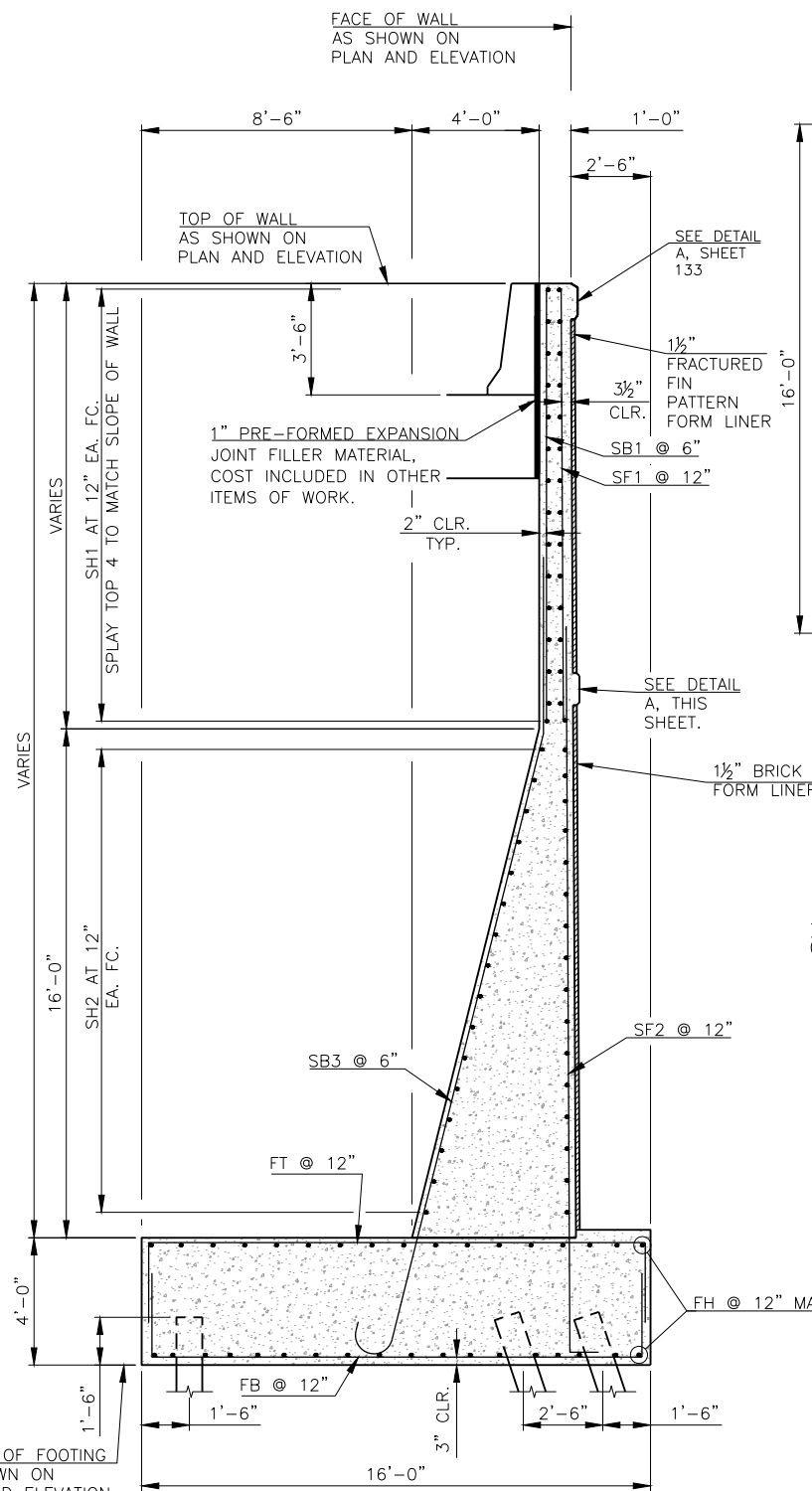


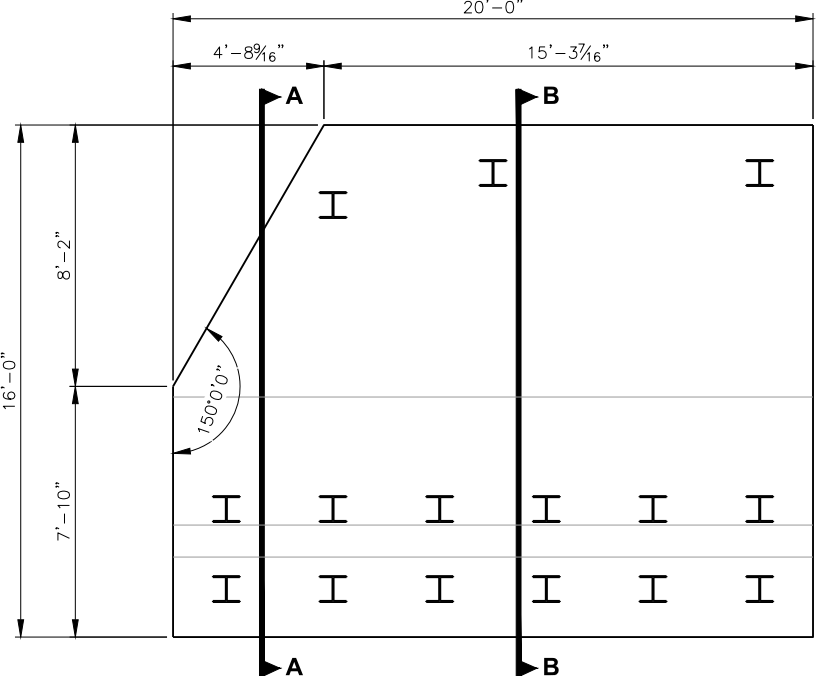
| DESCRIPTION | REVISIONS | DATE |
|-------------|-----------|------|
| | | |
| | | |
| | | |



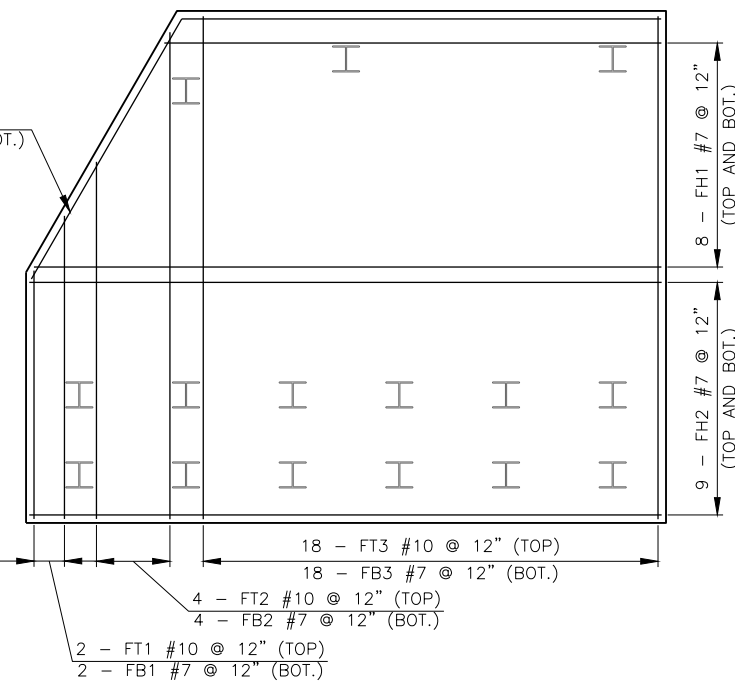
SECTION A-A
(RETAINING WALL NO. 2 PANEL NO. 1 SHOWN,
RETAINING WALL NO. 3 PANEL NO. 16 SIMILAR)



SECTION B-B
(RETAINING WALL NO. 2 PANEL NO. 1 SHOWN,
RETAINING WALL NO. 3 PANEL NO. 16 SIMILAR)



PLAN
(RETAINING WALL NO. 2 PANEL NO. 1 SHOWN,
RETAINING WALL NO. 3 PANEL NO. 16 SIMILAR)

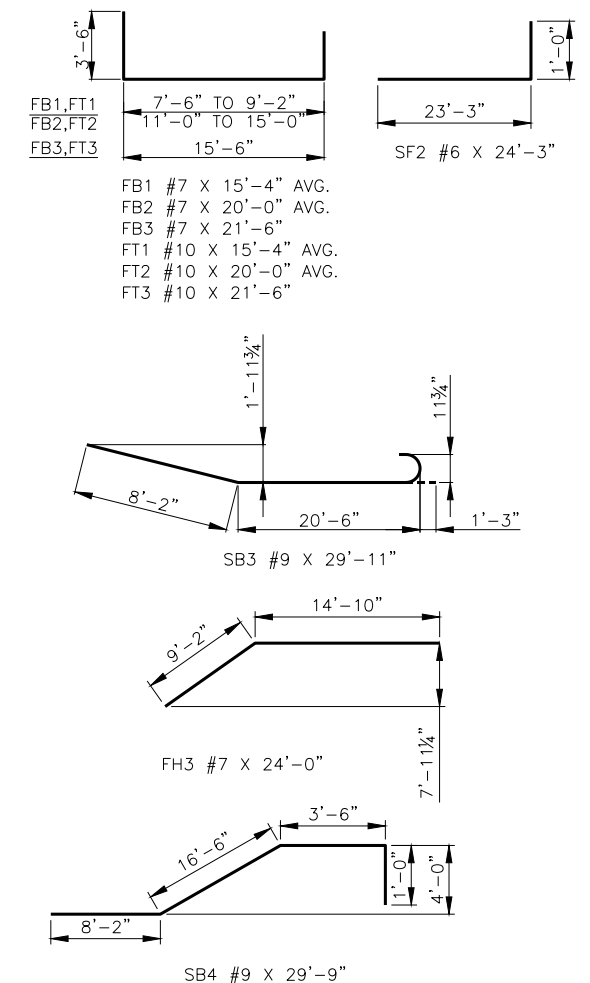


REINFORCING PLAN
(RETAINING WALL NO. 2 PANEL NO. 1 SHOWN,
RETAINING WALL NO. 3 PANEL NO. 16 SIMILAR)

SPECIAL RETAINING WALL BAR LIST
ONE REQUIRED FOR RETAINING WALL NO. 2 PANEL NO. 1,
ONE REQUIRED FOR RETAINING WALL NO. 3 PANEL NO. 16.

| EPOXY COATED REINFORCING | | | | | |
|--------------------------|------|-----|------|-------------|------------------|
| MARK | SIZE | NO. | FORM | LENGTH | LENGTH VARIATION |
| FB1 | #7 | 2 | BNT. | 15'-4" AVG. | 14'-6" TO 16'-2" |
| FB2 | #7 | 4 | BNT. | 20'-0" AVG. | 18'-0" TO 22'-0" |
| FB3 | #7 | 18 | BNT. | 21'-6" | |
| FH1 | #7 | 16 | STR. | 17'-3" AVG. | 15'-3" TO 19'-3" |
| FH2 | #7 | 18 | STR. | 19'-6" | |
| FH3 | #7 | 2 | BNT. | 24'-0" | |
| FT1 | #10 | 2 | BNT. | 15'-4" AVG. | 14'-6" TO 16'-2" |
| FT2 | #10 | 4 | BNT. | 20'-0" AVG. | 18'-0" TO 22'-0" |
| FT3 | #10 | 18 | BNT. | 21'-6" | |
| SB1 | #7 | 41 | STR. | 13'-8" | |
| SB3 | #9 | 31 | BNT. | 29'-11" | |
| SB4 | #9 | 10 | BNT. | 29'-9" | |
| SF1 | #4 | 21 | STR. | 13'-8" | |
| SF2 | #6 | 21 | BNT. | 24'-3" | |
| SH1 | #4 | 30 | STR. | 19'-8" | |
| SH2 | #6 | 32 | STR. | 19'-8" | |

① TWO SETS OF 8 BARS



NOTE:
ADJUST FB AND FH
BAR SPACINGS TO
CLEAR PILES.

| | | | |
|---------|--------|--|-----------------|
| DESIGN | B.J.K. | CROSTOWN BOULEVARD OVER CLASSEN BLVD. | OKLAHOMA COUNTY |
| DRAWN | R.A.P. | | |
| CHECKED | B.J.K. | | |
| APPROV. | T.A.C. | | |
| SQUAD | CEC | | |

SPECIAL RETAINING WALL DETAILS

JOB PIECE NO. 17428(88) SHEET NO. 134